

REPLACEMENT FEES	
ITEM	FEE
Individual Sports Ball	\$10
Trash Can	\$50
70 QT Cooler	\$55
120 QT Cooler	\$95
Chair	\$79
Volleyball Net	\$80
Badminton Set	\$80
Horseshoe Set	\$80
Kan Jam	\$80
Giant Jenga	\$80
Table	\$90
Giant Connect Four	\$100
Axe Throwing Set	\$100
Blow Up Movie Screen	\$120
Movie Projector	\$200
Cornhole Boards & Bags	\$350
10 x 10 Pop Up Tent	\$600
10 x 15 Pop Up Tent	\$1,000
PA System	\$1,049
Regular Bounce House	\$1,495
Electric Bike	\$3,065
Combo Bounce House	\$4,000
Inflatable Obstacle Course*	\$6,220
Inflatable Slide*	\$7,700

CLEANING FEES	
ITEM	FEE
Chair	\$1
Cooler	\$1
Table	\$1
Trash Can	\$1
Pop Up Tent	\$10
Cornhole Board Set	\$5
Regular Bounce House	\$25
Combo Bounce House	\$50
Obstacle Course	\$75
Inflatable Slide*	\$75
Command Conex Box*	\$100



Equipment will be inspected upon return for cleanliness and damage. Additional fees may apply.

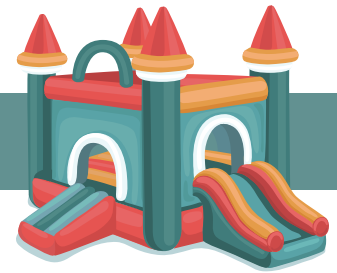


SCAN FOR HOURS OF OPERATION

2.20.26

OUTDOOR RECREATION RENTALS

Call (904) 542-2694 to make a reservation.



Let's party! Rent your equipment from us.

Located in Bldg. 27 on Langley Street, the Outdoor Recreation program offers a wide variety of equipment for both personal use and command functions. Items available for rent include tables, chairs, pop up canopy tents, various inflatable equipment such as bounce houses and movie screens, coolers, a variety of yard games and more.



RESERVATIONS

Personal and command rental bookings can be made up to one month in advance. Modifications can be made up to 24 hours before the reservation, and cancellations within 24 hours of the reservation are non-refundable.



Ceremonial rental bookings can be made up to six months in advance. Changes can be made up to 10 days before the reservation date, and cancellations within 10 days of the reservation are non-refundable.



PICK UP & DROP OFF

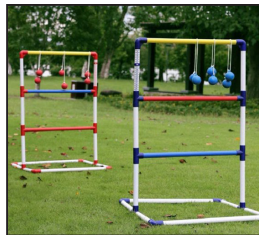
Pick Up: All equipment must be picked up between 8 am - 12 pm on the day of the rental agreement.

Drop Off: All equipment must be returned between 12:30 - 4 pm on the day indicated on the rental agreement form.

A truck or trailer and a work party is required for bounce house and large order pick ups and drop offs. Friday rentals not returned before 4 pm will be subject to the weekend rate.



PARTY EQUIPMENT & MORE		
ITEM	DAILY	WEEKEND
White Foldable Chair	\$2	\$2.50
Trash Can	\$2	\$4
Cooler (70 qt)	\$4	\$6
Cooler (120 qt)	\$6	\$8
Beverage Cooler (5 gal)	\$3	\$5
Beverage Cooler (10 gal)	\$6	\$8
Table 6'	\$7	\$9
Folding Table 6'	\$7	\$9
10' x 10' Pop Up Tent	\$30	\$40
10' x 15' Pop Up Tent	\$45	\$65
Tent Fan	\$5	\$10
Electric Bike	\$35	\$50
Propane Grill	\$50	\$80
PA System	\$75	\$80
16' Movie Screen + Projector	\$50	\$75
25' Movie Screen + Projector	\$90	\$100
LAWN GAMES		
ITEM	DAILY	WEEKEND
Bocce Ball Set	\$3	\$5
Individual Sports Balls	\$3	\$5
Flag Football	\$5	\$10
Horse Shoe Set	\$5	\$10
Sports Bag	\$5	\$10
Kan Jam	\$5	\$10
Ladderball Set	\$10	\$15
Volleyball Net Set	\$15	\$20
Giant Jenga	\$15	\$20
Giant Connect Four	\$15	\$20
Spikeball	\$15	\$20
Giant Chess Board Set	\$15	\$20
Cornhole Board Set	\$20	\$25
Plastic Axe Throwing Set	\$20	\$25
Dunk Tank*	\$100	\$130
INFLATABLES		
Blow Up Dart Board	\$110	\$120
Bounce House**	\$110	\$120
Giant Twister Game	\$110	\$120
Bounce Combo Slide**	\$130	\$160



*MWR events, command events & special events only.

**Customer must have large truck for transport.

CEREMONIAL EQUIPMENT		
ITEM	DAILY	WEEKEND
White Chair	\$2	\$2.50
VIP Black, Brown or Red Chair	\$5	\$8
Table 6'	\$7	\$9
Bell	\$7	\$8
Red Carpet (9' or 5' x 20')	\$10	\$15
Red Carpet (5' x 30')	\$15	\$20
Podium	\$13	\$15
Premium Black Podium	\$20	\$25
Gold or Silver Bullet Set (6)	\$20	\$25
Gold Bullet Set (8)	\$25	\$30
Drop Flag 15" x 25"	\$10	\$13
Drop Flag 20" x 30"	\$13	\$15
Drop Flag 20" x 38"	\$15	\$18
PA System	\$75	\$80
Bandshell Stage	\$500 <i>Includes delivery & set up</i>	
Platform Stage Pieces 8'x4', 4 total available	\$75 per section <i>Includes set up & breakdown</i>	
Full Platform Stage	\$250 <i>Includes set up & breakdown</i>	
FLAG ACCESSORIES		
State Flag	\$5	\$6
Armed Forces Flag	\$5	\$6
Flag Stand	\$5	\$8
Set of State or Territory Flags <i>Includes flag stands</i>	\$120	\$140



COMMAND SUPPORT EQUIPMENT

Available for official command functions only, this package includes: (100) stackable white chairs, (20) 6' rectangular tables, (4) cornhole board sets, (2) 120 QT coolers, (2) bounce houses, (2) blowers, (2) extension cords, (4) stakes and a sports bag containing a soccer ball, football, basketball, frisbee, kickball and a volleyball.

